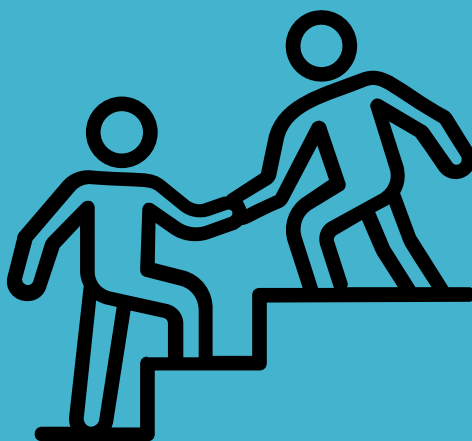
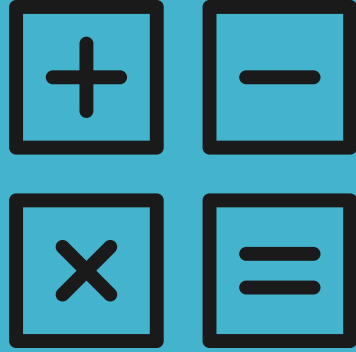




Exceptionally- Abled Programme



Exceptionally Able Programme

We are excited to share information about a new initiative at Clonturk Community College that reflects our ongoing commitment to supporting all students within our Continuum of Support. In alignment with national policy and best practice recommendations from the Inspectorate, we are pleased to announce the launch of our Exceptionally Able Programme (EAP).

The EAP will provide enriched opportunities for students identified as exceptionally able, based on their performance in the CAT4 (Cognitive Abilities Test). Specifically, students who achieved a Stanine score of 9 - either overall, or within the Verbal or Quantitative sections - have been invited to take part in this programme.

This initiative will be delivered in collaboration with the Centre for Talented Youth, Ireland (CTYI), a nationally recognised body specialising in supporting students with advanced learning abilities.

As part of the programme, participating students will have access to a variety of tailored supports within the school, designed to challenge and nurture their abilities further. These supports may include:

Extention and enrichment activities

Specilaised workshops in areas such as problem-solving, creativity and leadership

Peer learning opportunities with other students in the programme

Mentorship and guidance from staff with expertise in supporting high-ability learners

We are confident that this new programme will foster the academic, personal, and social growth of our exceptionally able students.

We look forward to working together to ensure every student reaches their full potential. Thank you for your continued support.

Clonturk Community College



EAP Learning Strands

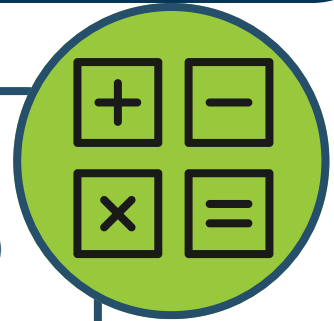
The Exceptionally Abled Programme is designed to support the diverse talents and abilities of post-primary school students, providing them with an enriching educational experience. This programme is structured around six specialized strands, each tailored to foster students' intellectual, creative, and personal development. Through a holistic approach, the programme aims to nurture exceptional abilities, encourage innovation, and build essential skills for lifelong success.

STEM

STEM for exceptionally abled post-primary students emphasizes developing strong mathematical reasoning and problem-solving skills. Through personalized learning and advanced strategies, students deepen their understanding of complex concepts, preparing them to apply math confidently in academic and real-world situations.

In relation to technology for exceptionally abled post-primary students, this focuses on enhancing digital literacy and problem-solving through advanced tools and platforms.

Personalized instruction helps students master technical skills, preparing them to use technology creatively and effectively in both academic and real-world contexts.



Creativity

Creativity for exceptionally abled post-primary students nurtures innovative thinking and self-expression through personalized artistic and problem-solving activities. The programme encourages students to explore their creative potential, applying original ideas in both academic and real-world scenarios.

In relation to literacy for exceptionally abled post-primary students, this focuses on enhancing reading, writing, and communication through personalized instruction. With tailored strategies, students build critical thinking, comprehension, and expression skills, enabling them to engage confidently with complex materials and real-world tasks.



Leadership

Leadership for exceptionally abled post-primary students underpins the two main strands. This focuses on developing communication, teamwork, and decision-making skills. Through tailored activities, students build confidence and learn to lead effectively in academic and real-world settings.





STEM

The STEM strand of the Exceptionally Abled Programme for post-primary students in Clonturk Community College focuses on developing advanced skills in science, technology, engineering, and mathematics. Designed to challenge and engage, this strand offers hands-on learning experiences, problem-solving activities, and real-world applications.

Students are encouraged to think critically, experiment with innovative ideas, and explore cutting-edge technology. By nurturing analytical thinking and fostering creativity in STEM fields, the programme helps students excel in complex concepts, preparing them for future academic pursuits and careers in science and technology.

Samples Projects & Competitions

Science

SciFest

STEM Passport for Inclusion

Reel Life Science

VEXV5 Robotics

All-Ireland Programming Olympiad

Maths

Maths Olympiad

1st year IMTA Maths Competition

4th Year Applied Maths Introduction

Significant Maths Research Project

Brilliant Platform

Careers Support

College visits

Company visits in various career sectors

One-to-One and group career

Focused vocational appointments

Study skills support

UCD summer school application support (5th Years)



Creativity

The Creativity strand of the Exceptionally-Abled Programme for post-primary students in Clonturk Community College blends artistic expression with elements of literacy to foster innovative thinking and communication skills. Students are encouraged to explore their creative potential through activities that integrate writing, storytelling, and visual arts.

By combining these elements, students not only express their ideas creatively but also enhance their literacy skills, such as descriptive writing, narrative construction, and critical analysis. This approach nurtures both their imaginative and linguistic abilities, preparing them to apply creative solutions and articulate ideas effectively in various academic and real-world contexts.

Sample Projects & Competitions

Creativity

Creative Schools

Digital Art Hub

Fighting Words

Poetry Aloud

Idea Mates

An Post - Writing Competition

Irish Writers Centre

Eureka Secondary School Competitions

Careers Support

College visits

Company visits in various career sectors

One-to-One and group career

Focused vocational appointments

Study skills support

UCD summer school application support (5th Years)



Leadership

The Leadership strand of the Exceptionally-abled Programme in Clontarf Community College will be embedded amongst the other EAP strands. The Leadership strands are designed to cultivate leadership skills, build character, and prepare students to navigate the complexities of personal and professional life. These components of a curriculum focus on helping students develop qualities like decision-making, communication, empathy, and strategic thinking. By engaging in various leadership activities, students are empowered to become confident, responsible, and influential members of their school and communities.

Sample Projects & Competitions

Leadership

Eureka Secondary School Competitions
Young Environmentalist Awards
Comhairle Na nÓg
European Youth Parliament
LIFT Schools Programme
European Youth Parliament

Careers Support

College visits
Company visits in various career sectors
One-to-One and group career
Focused vocational appointments
Study skills support
UCD summer school application support (5th Years)